



MBSP48-12



MBSP SERIES

Sandwich/Salad Prep Tables

MODELS

- MBSP27-8 MBSP36-10 MBSP48-12
 MBSP60-16 MBSP72-18



Drop-in section:

- Fans force cold air into this enclosed area keeping stored food items consistently cold
- A stainless steel divider prevents food spillage into the storage area beneath
- Accommodates 6" deep pans (4" standard)

FEATURES

CONSTRUCTION

- Stainless steel interior and exterior
- Foamed-in-place with low ODP polyurethane insulation
- Standard 9¹/₂" deep reversible cutting board
- Insulated top lid
- Wall thickness: 2.0"
- 6" overall height casters
- Adjustable heavy-duty shelves
- Field reversible door on MBSP27-8
- 1/6 size pans included in all models
- Locking adapter bars hold pans in place

DOORS

- Self-closing
- Standard door swing configuration:
 - 1-door models hinged right
 - 2-door models.....left hinged left, right hinged right
 - 3-door models.....left hinged left, middle hinged left, right hinged right

Door width:

- MBSP27-8..... 27³/₈"
- MBSP36-10..... 18"
- MBSP48-12..... 24"
- MBSP60-16..... 30"
- MBSP72-18..... 24"

REFRIGERATION

- Self-contained forced air refrigeration system
- Coated evaporator coil
- Refrigerant: R290
- Temperature range: 34° to 38°F (1° to 3°C) for storage area; 33° to 41°F (1° to 5°C) for refrigerated pan well

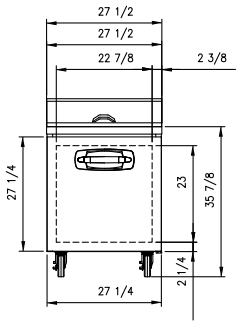
WARRANTY

- **Standard limited three year parts and labor**
- **Additional two year coverage on compressor part**

OPTIONS

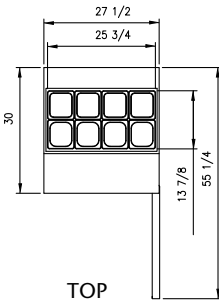
- 6" legs in lieu of casters (legs shipped loose)
- 4" casters in lieu of 6" casters (casters shipped loose)
- Additional shelves
- Single or double overshef



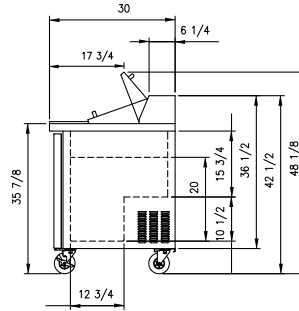


FRONT

MBSP27-8



TOP

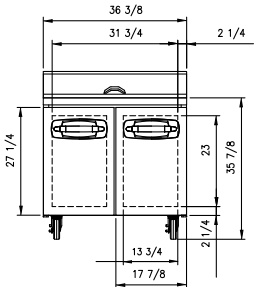


SIDE
ALL MODELS

SPECIFICATIONS

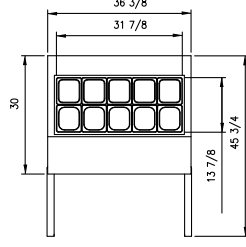
Models	MBSP27-8	MBSP36-10	MBSP48-12	MBSP60-16	MBSP72-18
Crated Weight (lbs) (kg)	157 (71)	190 (86)	234 (106)	256 (116)	298 (135)
Crated Height (in) (mm)	44-3/8 (1127)	44-3/8 (1127)	44-3/8 (1127)	44-3/8 (1127)	44-3/8 (1127)
Crated Width (in) (mm)	30-1/8 (765)	38 (965)	51-1/4 (1302)	63 (1600)	74-3/8 (1889)
Crated Depth (in) (mm)	33-1/2 (851)	33-1/2 (851)	33-1/2 (851)	33-1/2 (851)	33-1/2 (851)
Interior Height (in) (mm)	20 (508)	20 (508)	20 (508)	20 (508)	20 (508)
Interior Width (in) (mm)	23-5/8 (600)	32-1/2 (826)	44-5/8 (1113)	56-5/8 (1438)	68-5/8 (1743)
Interior Depth (in) (mm)	22 (559)	22 (559)	22 (559)	22 (559)	22 (559)
Overall Height (in) (mm)	42-1/2 (1080)	42-1/2 (1080)	42-1/2 (1080)	42-1/2 (1080)	42-1/2 (1080)
Overall Width (in) (mm)	27-1/2 (699)	36-3/8 (924)	48-1/4 (1226)	60-3/8 (1534)	72-3/8 (1838)
Overall Depth (in) (mm)	30 (762)	30 (762)	30 (762)	30 (762)	30 (762)
Gross Cubage (CuFt) (L)	6.7 (190)	9.1 (258)	12.5 (354)	15.9 (450)	19.2 (544)
Number of 1/6 Pans	8	10	12	16	18
Number of Shelves	1	2	2	2	3
Shelf Area (SqFt) (Sqm)	3.6 (0.33)	5 (0.46)	6.8 (0.63)	8.6 (.080)	10.5 (0.98)
Number of Casters	4	4	4	4	4
Condensing Unit Size	1/5 HP	1/5 HP	1/5 HP	1/5 HP	1/5 HP
Refrigerant	R290	R290	R290	R290	R290
Electrical Characteristics	115/60/1	115/60/1	115/60/1	115/60/1	115/60/1
Cord and Plug Furnished	Yes	Yes	Yes	Yes	Yes
NEMA Plug Configuration	5-15P	5-15P	5-15P	5-15P	5-15P
Total Amp Draw	3.5	3.5	3.5	3.5	3.5

Specifications subject to change without notice.

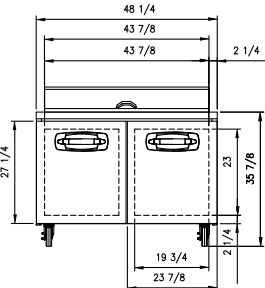


FRONT

MBSP36-10

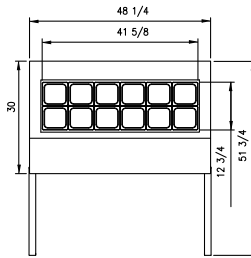


TOP

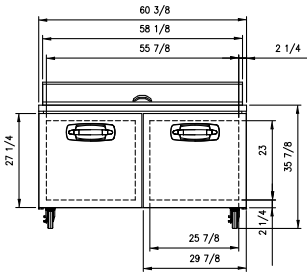


FRONT

MBSP48-12

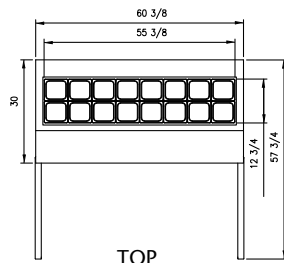


TOP

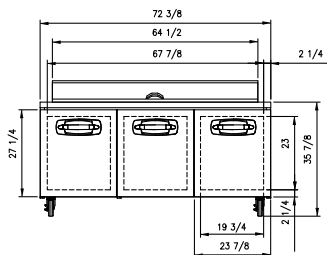


FRONT

MBSP60-16

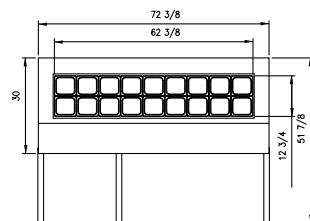


TOP



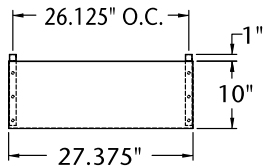
FRONT

MBSP72-18

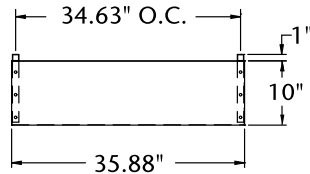


TOP

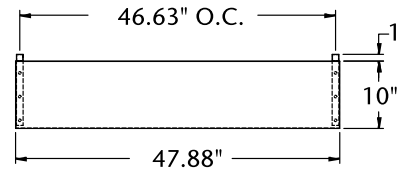
OPTIONAL OVERSHELF SPECIFICATIONS



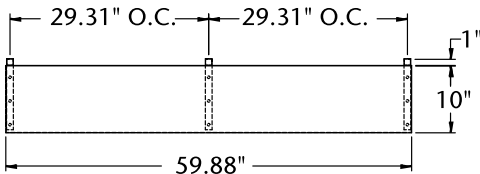
PLAN VIEW
MBSP27-8, MBSMP27-12



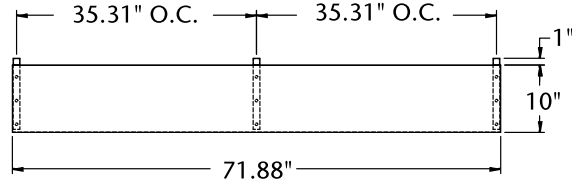
PLAN VIEW
MBSP36-10, MBSMP36-15



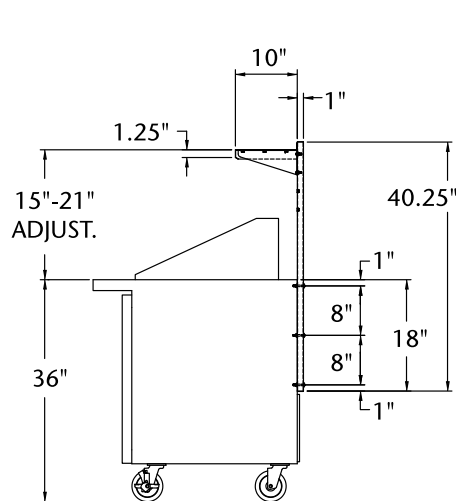
PLAN VIEW
MBSP48-12, MBSMP48-18



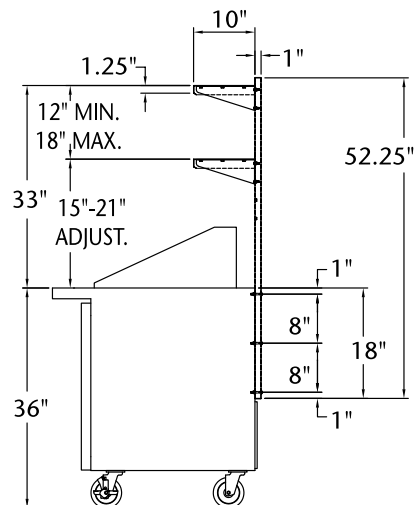
PLAN VIEW
MBSP60-16, MBSMP60-24



PLAN VIEW
MBSP72-18, MBSMP72-30



SINGLE SHELF SIDE VIEW



DOUBLE SHELF SIDE VIEW

BID SPECIFICATIONS

Item no. MBSP_____. Provide _____ Sandwich/Salad Prep Table(s), Master-Bilt® model no. MBSMP_____.

Prep table will feature stainless steel construction on interior and exterior and will be equipped with locking adapter bars allowing mixed sized pans.

Prep table will also feature an enclosed

drop-in section to keep food items consistently cold. This section will contain a stainless steel divider to prevent food spillage into the storage area beneath. Section will accommodate up to 6" deep pans (4" standard).

The refrigeration system will be bottom mounted and self-contained. Refrigerant

will be R290. The temperature range will be 32° to 40°F (0° to 4° C).

Prep table to have standard limited three year parts and labor with additional two year coverage on compressor part.

Prep table will be UL & C-UL listed and ETL Sanitation classified.

NOTE: Cabinet designed for optimum performance in air-conditioned area at 75°F ambient and 55% relative humidity. All specifications subject to change without notice.

MB MASTER-BILT®
Refrigeration Solutions

908 Highway 15 North • New Albany, MS 38652

PHONE: 800-647-1284 or 662-534-9061 • FAX: 800-232-3966 or 662-534-6049 • www.master-bilt.com

RSG
Refrigerated Solutions Group